



# Parwich Primary School Newsletter

Spring Term (1)  
28 February 2025

## Where does our food come from?



Both key stages have been learning about where our food comes from, how to preserve produce, how food is farmed and healthy eating.

To support this learning, School Council invited Janet, our school cook, to talk about life on a farm. She brought in photographs, animal tags and passports for the children to view.

Our council representatives also devised a list of questions to ask her, in order to further their knowledge of farming.

Throughout the assembly, all pupils listened intently and took on board the information Janet shared. We would like to thank Janet for her time and help, as she developed our understanding of life on a farm.

## Lunch Money - Junior Class Only

For parents who wish to pay for their child's lunches for the half term the amount, from September 2023, is **£3.25** a day for **20** days at a total of **£65.00**.

Cheques payable to **Derbyshire County Council**.

If you are in credit/arrears, you will receive a note home.

A reminder to parents who pay weekly: please send payments for dinners to school on Monday morning for the beginning of each week. Also, if at any point you wish your child to swap to or from lunches to sandwiches, we would need a weeks notice.



## Fruit Money - Junior Class Only

Parents can either pay for the whole year at a cost of **£22.50** or in 3 termly instalments,

September, January and April at a cost of **£7.50** per term.

Cheques payable to **Parwich Primary School**.

## Dates For Your Diary



### February 2025

3rd - Half term holiday

### March 2025

10th - School opens for Spring 2

18th - EYFS / KS1 Local Cluster Sport Fundamentals event at Waterhouses Primary School

18th - KS2 Local Cluster Netball event

21st - Comic Relief - Red Nose Day (details to follow)

25th - Derby Open Centre Workshops (TBC)



25th - Y3/4 Local Cluster Netball event

25th - Y5/6 'ActivLeaders' at Cluster Netball event

26th - NSPCC 'Speak Out, Stay Safe' Workshops

### April 2025

4th - Easter Eggstravaganza

7th - Easter Holiday

22nd - School opens for Summer -



## Term Dates for 2024 - 2025

### Spring Term 2025

Monday 10 March 2025 - Friday 4 April 2025

### Summer Term 2025

Tuesday 22 April 2025 - Friday 23 May 2025

Monday 2 June 2025 - Thursday 24 July 2025

### INSET

Monday 2 June 2025



## Term Dates for 2025 - 2026

### Autumn Term

Thursday 4 September 2025 - Friday 24 October 2025

Monday 3 November 2025 - Friday 19 December 2025

### Spring Term

Monday 5 January 2026 - Friday 13 February 2026

Monday 23 February 2026 - Friday 27 March 2026

### Summer Term

Monday 13 April 2026 - Friday 22 May 2026

(Monday 4 May - Bank Holiday)

Monday 1 June 2026 - Thursday 23 July 2026

### INSET

Thursday 4 September, Friday 5 September, Monday 5 January, Thursday 23 July & 1 other date to be confirmed

**'Together Everyone Achieves More'**

School Website - [www.parwich.derbyshire.sch.uk](http://www.parwich.derbyshire.sch.uk)

## Castles

Do you know what a portcullis is? The Infants do.

They have studied, designed, made and evaluated castles. The brief was to create a castle with a movable section and a joining method. Everyone worked hard to cut their battlements and create their drawbridges.



## Maya Masks

Building on KS2's topic on the Maya, the Junior Class pupils created masks using clay. They threw their clay, rolled the clay, created slip pots to help join elements of their masks. Then, they sculpted using a variety of methods like pinching and carving.



More photos on our school website.



**'Together Everyone Achieves More'**

School Website - [www.parwich.derbyshire.sch.uk](http://www.parwich.derbyshire.sch.uk)

**After School Clubs  
Spring Term (2)**

**Monday (3:15 - 4:15pm)  
Construction**



**Tuesday (3:15 - 4:15pm)  
Traditional Playground  
Games**



**Wednesday (3:15 - 4:15pm)  
Art & Craft**



**Thursday (3:15 - 4:15pm)  
Toys and Games**



**Fri- day  
(3:15 - 4:15pm)  
Construction**



If your child is interested in attending a club, please contact Jenny Warner in the school office.

Charges for clubs will be £3.50 per session.

## **Parwich Primary School PTA**

Thank you to our active PTA members.



### **Upcoming Events**

Spring Raffle - More details to follow.



**A huge thank you to all who support the school.**

### **R.E.**

In the Junior Class, the pupils have been learning about the 5 Pillars of Islam and why they are important for Muslims.



On Wednesday 12 February, the children enjoyed an additional afternoon of R.E. teaching; they had a lovely afternoon learning more about the festival of Ramadan.

During this time, they made some beautiful clay prayer mats and tried some food Muslims may eat at Iftar.



### **A Big Thank You**

A big thank you is being extended to Parwich and District Horticultural Society, after they kindly donated £200 to Parwich Primary School.

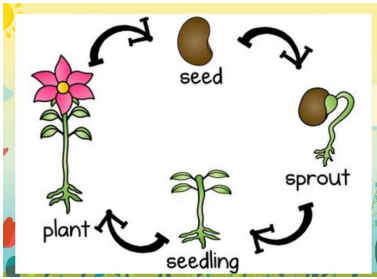


**'Together Everyone Achieves More'**

School Website - [www.parwich.derbyshire.sch.uk](http://www.parwich.derbyshire.sch.uk)

## Infant Class Science

In Science, the Infant pupils have been busy learning about plants. The ks1 children can identify some wild and garden plants and know the difference between deciduous and evergreen trees. They have also planted, watered and tended to a variety of seeds to learn more about plant life cycles.



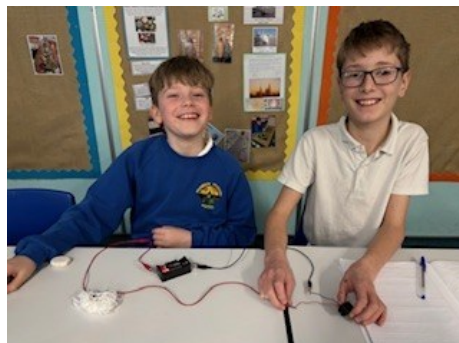
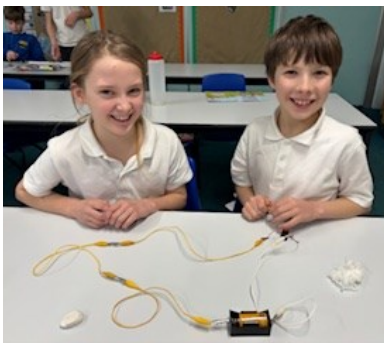
## Junior Class Science

During the Autumn Term, the Junior pupils developed their understanding around 'Living Things and their Habitats' and 'Plants'. As part of their learning, they investigated the way in which water is transported within plants and explored the part that flowers play in the life cycle of flowering plants, including pollination, seed formation and seed dispersal.

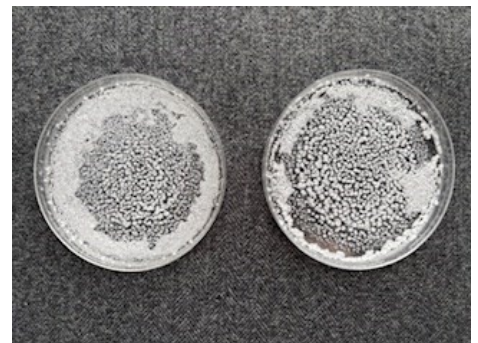


This half term, the Y5 & 6 pupils have eagerly started to develop their knowledge and understanding relating to 'Properties and Changes of Materials'. They have compared and grouped everyday materials on the basis of their properties, experimented to discover whether some materials will dissolve in liquid to form a solution and tested to see how you might recover a substance from a solution.

### Is this Material an Electrical Conductor?



### Recovered Salt from a Solution



## Safeguarding / Health & Safety/ E-Safety



### Understanding Online Games

Online games can be a great way for children and young people to keep busy and stay in touch with friends and family, but it is vital that they play safely.

Things to consider if your child games online:

- ◆ Age ratings of games they play;
- ◆ Messaging and contact functions on the games;
- ◆ In-game purchases;
- ◆ Trolling, griefing and scams;
- ◆ How to report problems;
- ◆ Where they can get further support;
- ◆ The length of time spent online; keep it healthy.

Also, if you have more than one child in your home, be aware that games suitable for one child to play or watch, may not be suitable for another.



### Our Role Play Area



In the Infant Class, our role play area frequently changes. This term, the pupils have had Jack and the beanstalk's house, Parwich Primary School's A&E department and a police / fire station.

These areas provide the pupils with vital opportunities to develop their language and communication skills.

### Useful Websites



Links to all of these can be found on our school website.

[www.parwich.derbyshire.sch.uk/links](http://www.parwich.derbyshire.sch.uk/links)

**'Together Everyone Achieves More'**

School Website - [www.parwich.derbyshire.sch.uk](http://www.parwich.derbyshire.sch.uk)