



# Parwich Primary School Newsletter

Spring Term (2)

28 March 2024

## Summer Term PE Timetable

The Infant Class pupils will need to come dressed in their PE kits every Friday and also on Tuesday 30th April for a local cluster fundamental sports event.

The Junior Class pupils will need to come dressed in their PE kits every Tuesday.

Junior swimming lessons are now completed.

## Lunch Money - Junior Class Only

For parents who wish to pay for their child's lunches for the half term the amount, from September 2023, is **£3.25** a day for **29** days at a total of **£94.25**.

Cheques payable to **Derbyshire County Council**.

If you are in credit/arrears, you will receive a note home.

A reminder to parents who pay weekly, please send payments for dinners to school on Monday morning for the beginning of each week. Also, if at any point you wish your child to swap to or from lunches to sandwiches, we would need a weeks notice.

## Fruit Money - Junior Class Only

Parents can either pay for the whole year at a cost of **£22.50** or in 3 termly instalments,

September, January and April at a cost of **£7.50** per term.

Cheques payable to **Parwich Primary School**.

## Banking Arrangements

For BACS payments, please contact the school office for bank account details.

Please, use the following information as a reference, making sure each item is sent as a separate payment.

### **Regular Payment References:**

- ◆ Dinner Money
- ◆ Fruit Money
- ◆ After School Club
- ◆ Uniform
- ◆ Water Bottle
- ◆ Reward Badge
- ◆ Gum Shield



### **Ad Hoc Payments References:**

For any other payments into school (i.e. trips, voluntary contributions, sponsorship etc.) the reference for BACS payments will be on the letter/email sent out to parents.

## Dates For Your Diary

### March/April 2024

28th - INSET Day (school closed to pupils)

### March/April 2024

29th March - Easter Holiday

### April 2024

15th - School reopens for Summer 1

25th - Bag2School

30th - EYFS/KS1 Local cluster fundamental sport event (Please, come dressed in PE kit)

30th - KS2 Local cluster mega athletics event

### May 2024

6th - Bank Holiday Monday (school closed)

13th - 16th KS2 SATS Week

21st - KS2 Local cluster kwik cricket event

### May / June 2024

27th Half Term Holiday

### June 2024

3rd - School reopens for Summer 2

## Term Dates for 2023 - 2024

### Summer Term

Monday 15 April 2024 - Friday 24 May 2024  
(Monday 6 May 2024 - Bank Holiday)

Monday 3 June 2024 - Tuesday 23 July 2024

### INSET

Thursday 28 March 2024, Monday 22 July 2024 and Tuesday 23 July 2024.

## Term Dates for 2024 - 2025

### Autumn Term 2024

Wednesday 4 September 2024 - Friday 25 October 2024

Monday 4 November 2024 - Friday 20 December 2024

### Spring Term 2025

Monday 6 January 2025 - Friday 28 February 2025

Monday 10 March 2025 - Friday 4 April 2025

### Summer Term 2025

Tuesday 22 April 2025 - Friday 23 May 2025

Monday 2 June 2025 - Thursday 24 July 2025

### INSET

Wednesday 4 September 2024, Thursday 24 July 2025, plus three further dates TBC

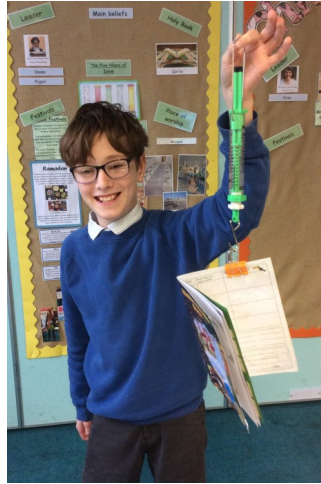


**'Together Everyone Achieves More'**

School Website - [www.parwich.derbyshire.sch.uk](http://www.parwich.derbyshire.sch.uk)

## Science

Our Year 5 & 6 pupils are able to explain that unsupported objects fall towards the Earth because of the force of gravity acting between the Earth and the falling object. Whilst learning about gravity, they have also enjoyed accurately measuring the force of gravity pulling on objects



## Music



This half term, the Infant pupils have been exploring pitch in their music lessons. They have thoroughly enjoyed practising the melody of a song on chime bars, as part of their work.

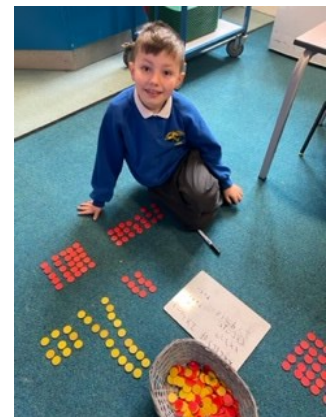
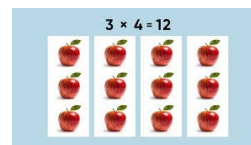


### Coding

Years 5 & 6 created their own racing games on Scratch.

### Multiplication & Division

We love using manipulatives in Maths. Using arrays to support multiplication has enabled pupils to work out a variety of new times tables.



**'Together Everyone Achieves More'**

School Website - [www.parwich.derbyshire.sch.uk](http://www.parwich.derbyshire.sch.uk)

## Sensational Safari

The Infant pupils have been learning about Kenya. They have located it in an atlas and drawn a simple map adding human and physical geographical landmarks, including Mount Kenya, Lake Victoria, Nairobi and the River Tana.

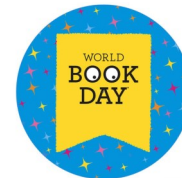
They also looked at the Maasai Mara and the people who live there. They made some amazing Maasai people and practised the energetic Maasai jumping dance.



## World Book Day



Amazing effort everyone.  
All children discussed their costumes, books, extreme reading photographs and helped create villains for a story.



## 'Eggstravaganza'

The day consisted of designing a superhero egg, an Easter assault course, 'eggercise', decorating boiled eggs and an exciting egg roll followed by an Easter egg hunt.  
What an 'eggscellent' day!



**'Together Everyone Achieves More'**

School Website - [www.parwich.derbyshire.sch.uk](http://www.parwich.derbyshire.sch.uk)

**After School Clubs**

Summer Term (1)

**Monday (3:15 - 4:15pm)**

Years REC - 6

Art & Craft Club



**Tuesday (3:15 - 4:15pm)**

Years REC - 6

Traditional Playground Games



**Wednesday (3:15 - 4:15pm)**

Years REC - 6

Construction



**Thursday (3:15 - 4:15pm)**

Years REC - 6

Toys and Games



If your child is interested in attending a club, please contact Jenny Warner in the school office.

Charges for clubs will be £3.50 per session.



**Red Nose Day**

What a fantastic array of silly socks!

We raised £24.00 for Comic Relief.

Thank you!



**PTA**

Thank you to our active PTA members, who have kindly organised the following events.

Recent Fundraising Events:

Wednesday 27th March - Break the Rules Day

Forthcoming Events:

Thursday 25th April - Bag2School

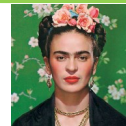
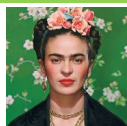
Next Meeting: TBC



**A huge thank you to all who support the school.**

**South American Inspired Art**

We researched the Mexican artist, Freda Kahlo, and this inspired us to look at animals that live there and use them to create sculptures out of clay.



**'Together Everyone Achieves More'**

School Website - [www.parwich.derbyshire.sch.uk](http://www.parwich.derbyshire.sch.uk)

## Safeguarding / Health & Safety

When dropping off, or picking up your child, we kindly ask that you do not park or drive near to school, as it becomes a danger to pedestrians coming to and from school.

For the safety of all our pupils, please pass this message on to all adults coming to the school for your children.



Thank you for your cooperation  
in helping to keep all of our  
children safe.



## Longcliffe Tree Planting KS2



The Forestry Commission have thanked all the Junior pupils, after they spent an afternoon in a field near Longcliffe helping to plant some of the 7,000 trees that have just been approved for planting. We were delighted to be one of the few schools to be invited to participate in the project.

In one hour, our pupils (working in pairs) managed to plant just over 100; we are very proud of their efforts and are eager to be able to watch them grow into mature trees. If you wish to take an occasional stroll by them and wish to know where they are located, please speak to Mrs Tomblin.

## Useful Websites



Links to all of these can be found on our school website.

[www.parwich.derbyshire.sch.uk/links](http://www.parwich.derbyshire.sch.uk/links)

**'Together Everyone Achieves More'**

School Website - [www.parwich.derbyshire.sch.uk](http://www.parwich.derbyshire.sch.uk)